

Oct 17-1957 1:30 P.M.
 Oct 18-1957
 John W. Campbell
 Recorder, Guernsey Co., O.
 Rec. 1302 Filed Oct 17-1957

LOCATION PLAN

GUE-21-10.45

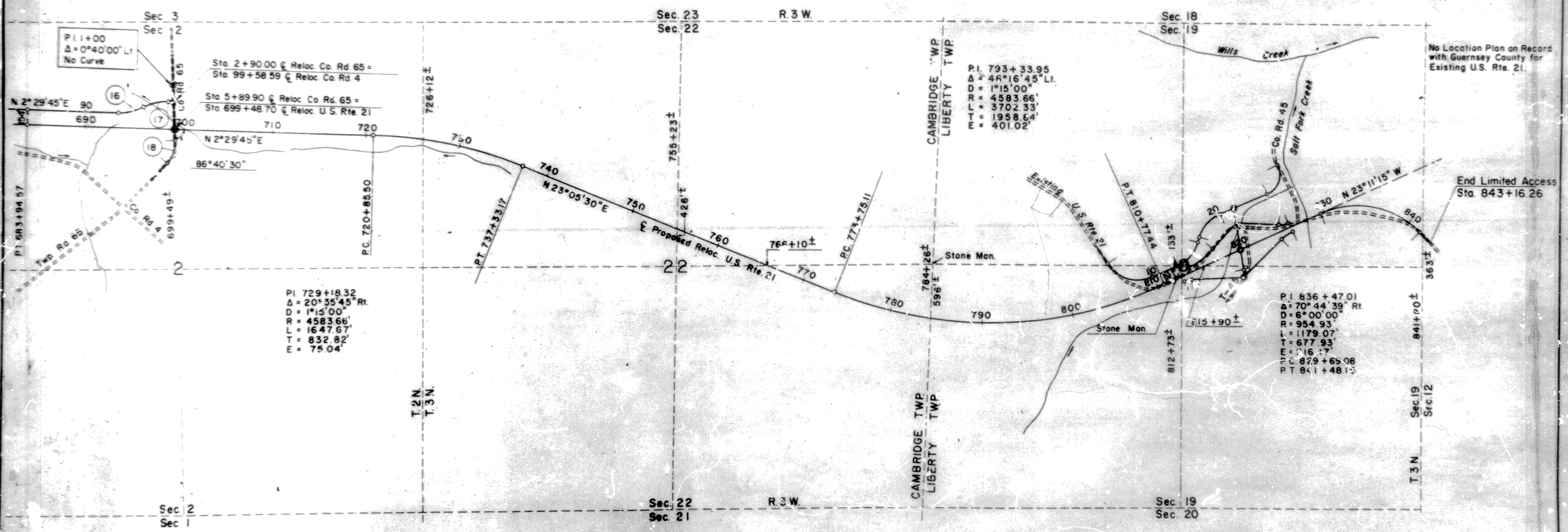
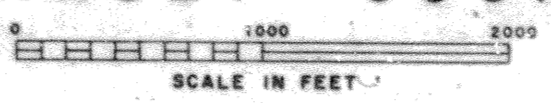
NEW COMERSTOWN ROAD

GUERNSEY COUNTY

9

Signed *Robert E. Smith*
 Robert E. Smith P.E. No. 18042
 Date Sept. 20, 1957 Partner - Capital Engineering Associates

Note: This instrument prepared by the Ohio
 Dept. of Hwys. under the supervision
 of R. C. Chappell, P.E. No. 3347
 Signed *R. C. Chappell*
 State Surveyor No. 1560
 Re. 1st Division Deputy Director
 Date 10/1/57



No Location Plan on Record with Guernsey County for Existing U.S. Rte. 21.

End Limited Access Sta. 843+16.26

⑬	⑭	⑮
P.I. 94+81.01 $\Delta = 31^{\circ}30'00''$ Lt. D = 11*27'32" R = 500' L = 274.89' T = 141.01' E = 19.50' P.C. 93+40.00 P.R.C. 96+14.89	P.I. 97+55.90 $\Delta = 31^{\circ}30'00''$ Rt. D = 11*27'32" R = 500' L = 274.89' T = 141.01' E = 19.50' P.R.C. 96+14.89 P.T. 98+89.78	P.I. 8+47.56 $\Delta = 42^{\circ}15'45''$ Rt. D = 16*22'12" R = 350' L = 257.96' T = 135.16' E = 25.19' P.C. 7+12.43 P.T. 9+70.39

*This improvement has been declared a Limited Access Highway or Freeway by action of The Director of Highways and recorded in Volume 41, page 1191, of The Director's Journal in accordance with the provisions of Section 5511.02, Revised Code (117B-21 General Code) of Ohio, and dated December 5, 1956.

